



## Cardiac and Stroke Networks in Lancashire & Cumbria

### Stroke Thrombolysis Training Requirements

Current 9-5 patient stroke thrombolysis pathway differs across the Network according to local environment issues. The proposed out of hours pathway also differs as to where initial assessment, drug delivery, and subsequent monitoring is proposed to take place. These local differences will have an impact on who will require training at individual sites to facilitate safe treatment delivery.

Within the Network all acute sites currently plan deliver a 9 - 5 Stroke Thrombolysis Service. With the adoption of Telestroke option Network wide, this will enable the delivery of a 24/7 service for stroke thrombolysis. The effective and safe implementation of stroke thrombolysis pathways requires suitably trained and knowledgeable staff.

F.A.S.T. +ve patient's who self-present will need to be initially reviewed by reception staff, who should then contact triage nursing staff as a matter of urgency, to facilitate an rapid review

ED nursing staff will need to be able to undertake stroke assessment utilising the Recognition of Stroke in the Emergency Room (ROSIER) assessment tool which will assist in the early recognition of potential stroke thrombolysis patients.

ED junior & middle grade medical staff (Patient Bedside Referrer) and stroke skilled nurses need to have an in depth knowledge of the stroke thrombolysis pathway. Ideally would be NIHSS trained, or capable of competently undertaking an NIHSS assessment, along with full patient assessment, under remote direction from the Remote Telestroke Consultant (Decision Support Provider), to enable final decision to be made.

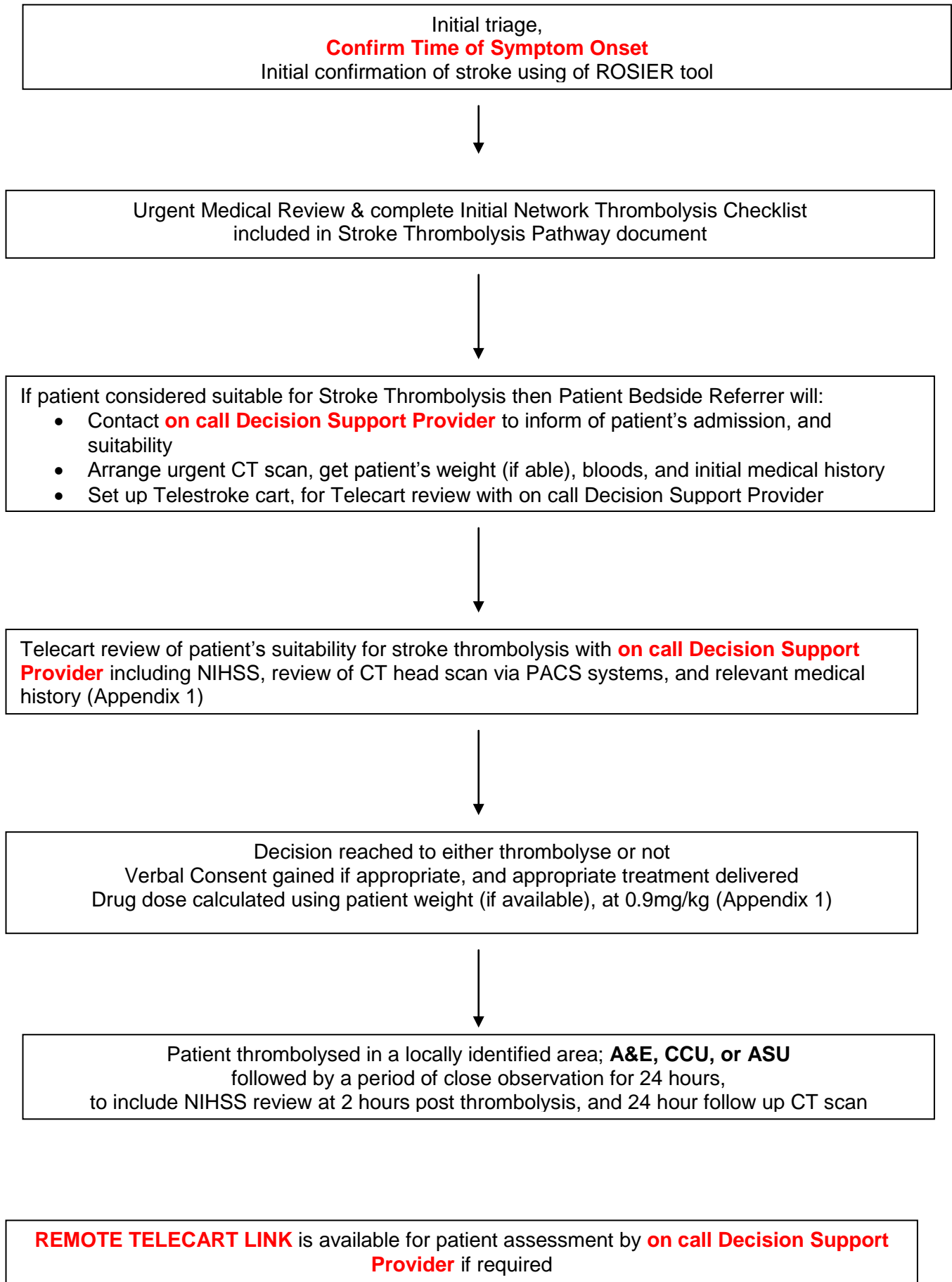
The Patient Bedside Referrer will require the skills and knowledge to prescribe and deliver thrombolysis drugs, in a safe manner. A knowledge and understanding a of potential adverse effects, along with the skills and expertise to manage these potential adverse incidents will be required.

Locally identified post thrombolysis monitoring area (A&E, CCU/HDU, or ASU) require knowledge and skills to competently undertake a period of intensive monitoring. A knowledge and understanding of potential adverse effects, along with access to the skills and expertise required to manage these potential adverse incidents.

Consultant stroke physicians, Neurologists, and ED Consultants who are acting as Decision Support Providers will require knowledge and expertise commensurate to this position. They will be required to have undertaken recognised accredited stroke thrombolysis training, CT scan interpretation training, National Institute of Health Stroke Scale (NIHSS) training, and have an in depth working knowledge of the stroke thrombolysis pathway.

**All staff using Telemedicine equipment needs to have training on its safe and effective use.**

## A Simplified stroke thrombolysis pathway



## Training Requirements

The following training requirements are taken from the operational policy for the implementation of Telestroke. These training requirements cover all staff groups that may be involved in the out of hours Thrombolysis pathway within the different localities. Some training sources including “on-line” resources may require staff groups to undergo training away from the workplace.

**The following is a breakdown of required training, along with target staff groups;**

Training Element	Target Group	Delivered / Organised by	Training Source
FAST training	ED Reception Staff	Network staff or locally identified trainer	Cardiac and Stroke Network Presentation
ROSIER training	ED Nursing Staff	Network staff or locally identified trainer	Cardiac and Stroke Network Presentation
NIHSS training	ED Medical staff & specialist nursing staff	Online	<a href="http://nihss-english.trainingcampus.net/">http://nihss-english.trainingcampus.net/</a>
Advanced thrombolysis training module	Middle Grade Medical staff, & specialist nursing staff	Online	<a href="http://www.strokeadvancingmodules.org/node.asp?id=thrombolysis">http://www.strokeadvancingmodules.org/node.asp?id=thrombolysis</a>
Masterclass thrombolysis training	Registrar level, & ED Consultants	Online	<a href="http://www.strokeadvancingmodules.org/labyrinth_thrombo/">http://www.strokeadvancingmodules.org/labyrinth_thrombo/</a>
CT Interpretation and Assessment Training	Stroke Physicians and ED Consultants	Neuroradiologist Dr IT	Network organised training event. 2 day course, 1 training day + 1 assessment day,(RCP accredited)
Advanced Course in Neurology and management of stroke	Consultants, SpRs in Medicine, Neurology, A&E, Vascular Neuro	Dr SP, Stroke Physician RPH.	Network organised training event, Education Centre 1, Royal Preston Hospital Thursday, 17th February 2011
Training on telemed cart	All staff using equipment	Manufacturer, locally identified trainer	Manufacturer, DVD information source, device training handbooks
<b>General Stroke and TIA Awareness Training</b>			
Stroke & TIA assessment Training (STAT)	Nursing staff involved in stroke & TIA assessment	Network / or via Dr CP	Either Network organised, or accessed via <a href="http://www.northumbria.nhs.uk/section.asp?id=311530">http://www.northumbria.nhs.uk/section.asp?id=311530</a>
MedSTAT Stroke and TIA assessment training	Medical staff involved in stroke & TIA assessment	Network / or via Dr CP	Either Network organised, or accessed via <a href="http://www.northumbria.nhs.uk/menu.asp?id=314988">http://www.northumbria.nhs.uk/menu.asp?id=314988</a>
Stroke Training and Awareness Resources (STARS)	Qualified / un qualified nursing staff from primary, secondary, and social care settings	On line training resource	<a href="http://www.strokecorecompetencies.org/node.asp?id=home">http://www.strokecorecompetencies.org/node.asp?id=home</a>

Training has been delivered at all sites around the implementation of the stroke thrombolysis pathway, (see attached tables). This has enabled the majority of sites within the Network to be able to provide 9-5 stroke thrombolysis. Most of the relevant staff groups have received training, with ED junior & middle grade medical staff being most difficult to effectively access.

Several factors have impacted on the Telestroke training schedule, including staff availability, work load, individual local pathway differences, coupled with the effect of winter pressures and the current financial status. Those Network sites who are presently delivering stroke thrombolysis, have the benefit of practical skills and knowledge gained, which can be transferred to a 24/7 service. The timescale for the introduction of Telestroke service has also had an impact on training, with no firm date for implementation of the service.

## Delivered Training to date

Site	Staff	Training Received	Number Trained	
FGH	ED Receptionists	FAST	10	
		Thrombolysis Awareness	23	
	ED Nursing Staff	ROSIER	28	
		STAT	1	
	Clinical skills staff	Thrombolysis Awareness	2	
	Night co-ordinator	Thrombolysis Awareness	1	
	ED Doctors/Consultants	Thrombolysis Masterclass	1	
		ROSIER	5	
	Stroke Physicians/SSN	Thrombolysis Awareness	2	
		Thrombolysis Masterclass	1	
	Radiologists	Thrombolysis Awareness	1	
	Thrombolysis Area - Stroke Unit	Stroke Awareness	21	
		Level 6 Stroke Course	3	
		Thrombolysis Awareness	1	
	Physiotherapists	Stroke Awareness	9	
		GP in Primary Care Assessment	Thrombolysis Masterclass	1
	Student Nurses	Thrombolysis Awareness	6	
	RLI	ED Receptionists	Thrombolysis Awareness	7
		ED Nursing Staff	Thrombolysis Awareness	11
ROSIER			25	
STAT			2	
Stroke Awareness			2	
Local Thrombolysis Awareness			26	
CCU Nursing staff		Local Thrombolysis Awareness	16	
ED Doctors/Consultants		Thrombolysis Awareness	3	
		NIHSS	3	
Stroke Physicians/SSN		Thrombolysis Awareness	4	
		Thrombolysis Masterclass	1	
		NIHSS	2	
		CT Assessment	0	
ED Junior Medical staff		General Awareness		
Radiologists		Thrombolysis Awareness	3	
Thrombolysis Area - Stroke Unit		Thrombolysis Awareness	9	
		Stroke Awareness	2	
		Level 6 Stroke Course	4	
Vascular Surgeon		Thrombolysis Awareness	1	
Primary Care GP	Thrombolysis Masterclass	1		

<b>WGH</b>	ED Receptionists		4	
	ED Nursing Staff		15	
	ED Doctors/Consultants	Thrombolysis Masterclass	1	
	Stroke Physicians/SSN	Stroke Awareness Thrombolysis Masterclass	3 1	
<b>S&amp;F</b>	ED Receptionists	FAST	2	
	ED Nursing Staff	Thrombolysis Awareness ROSIER	25 25	
		STAT (no numbers)	?	
	Clinical skills staff	Thrombolysis Awareness	1	
	ED Doctors/Consultants	Thrombolysis Masterclass ROSIER	2	
	Stroke Physicians/SSN	Thrombolysis Awareness Thrombolysis Masterclass	1 1	
	Radiologists	Thrombolysis Awareness		
	<b>RBH</b>	ED Receptionists		
		ED Nursing Staff	Thrombolysis Awareness Rosier Training Level 6 Stroke Course Thrombolysis Pathway Training	25 8 1 30
ED Doctors/Consultants		Thrombolysis Masterclass	3	
Stroke Physicians/SSN		Thrombolysis Awareness Thrombolysis Masterclass NIHSS CT Assessment	1 4 1 2	
Radiologists				
Thrombolysis area - Stroke Unit		Thrombolysis Awareness Stroke Awareness	6 22	
Therapy Staff		Level 6 Stroke Course	2	

<b>BVH</b>	ED Receptionists		4
	ED Nursing Staff	Thrombolysis Awareness	1
	ED Doctors/Consultants	Thrombolysis Masterclass	2
	Stroke Physicians/SSN	Thrombolysis Awareness	3
		STAT	1
		Thrombolysis Masterclass	5
		NIHSS	
		CT Assessment	
	Radiologists	Thrombolysis Awareness	1
	Radiology Consultant	Thrombolysis Awareness	1
Thrombolysis Area - Stroke Unit	Thrombolysis Awareness	11	
	STAT	12	
	Level 6 Stroke Course	4	
<b>CI</b>	ED Receptionists		
	ED Nursing Staff	ROSIER/ thrombolysis	13
	ED Doctors/Consultants	ROSIER/ thrombolysis	2
	ED Doctors/Consultants		
	Stroke Physicians/SSN	STAT	2
		Thrombolysis Masterclass	1
		BASP/Thrombolysis	3
		NIHSS	2
		CT Assessment	
	Radiologists		
	Thrombolysis Area - Stroke Ward	Thrombolysis Awareness	6
STAT (same 2)		2	
Elm A Ward	Thrombolysis Awareness	6	
<b>WCH</b>	ED Receptionists		4
	ED Doctors/Consultants	BASP/Thrombolysis	2
	Stroke Physicians/SSN	STAT	1
		BASP/Thrombolysis	1
		NIHSS	1
		CT Assessment	
	Radiologists		
	Thrombolysis Area - Stroke Ward	Thrombolysis Awareness	7

<b>RPH</b>	ED Receptionists	FAST Awareness	3
	ED Nursing Staff	Thrombolysis Awareness	3
		Rosier Training	13
	ED Doctors/Consultants	Thrombolysis Masterclass	1
	Stroke Physicians/SSN	Thrombolysis Masterclass	10
		NIHSS	1
		CT Assessment	
	Radiologists	Thrombolysis Awareness	1
		Thrombolysis Masterclass	11
	Thrombolysis Area - Stroke Ward	Thrombolysis Awareness	16
		STAT	4
		Stroke Awareness	3
	Dietitian on Stroke Ward	Thrombolysis Awareness	3
	Physiotherapists	Thrombolysis Awareness	4
Occupational Therapists	Thrombolysis Awareness	3	
Speech & Language Therapists	Thrombolysis Awareness	1	
<b>CH</b>	ED Receptionists		
	ED Nursing Staff	Thrombolysis Awareness	1
		Rosier Training	6
	ED Doctors/Consultants	Thrombolysis Awareness	1
	Stroke Physicians/SSN	Thrombolysis Masterclass	2
	Radiologists	Thrombolysis Awareness	2
Thrombolysis Area - ASU (Rookwood A)	Stroke Awareness	16	
	Thrombolysis Masterclass	2	
<b>NWAS</b>	Paramedics	Thrombolysis Awareness	23
	Operational Supervisor	Thrombolysis Awareness	4
	Professional Development Manager	Thrombolysis Awareness	1
	Head of Service Development	Thrombolysis Awareness	1
	Technician	Thrombolysis Awareness	8
	Education & Training Manager	Thrombolysis Awareness	2
Clinical Performance Facilitator	Thrombolysis Awareness	1	
Team Leader	Thrombolysis Awareness	1	